



St. Nikolai (Eagle) MVID#1108

Svjatoi Nikolai (Святой Николай) is perhaps the most and longest-studied wreck site in Finland, but today it is only a pale shadow of what it once was, even though there are still a few cannons and a few loose objects in the wreck.

Location (WGS84) and date of last inspection: Lat: 60° 25.8621' N, Lon: 26° 57.3679' E // August 27, 2023

Depth & length & direction: 14-17 m, about 35m and keel direction about 90° / 270°

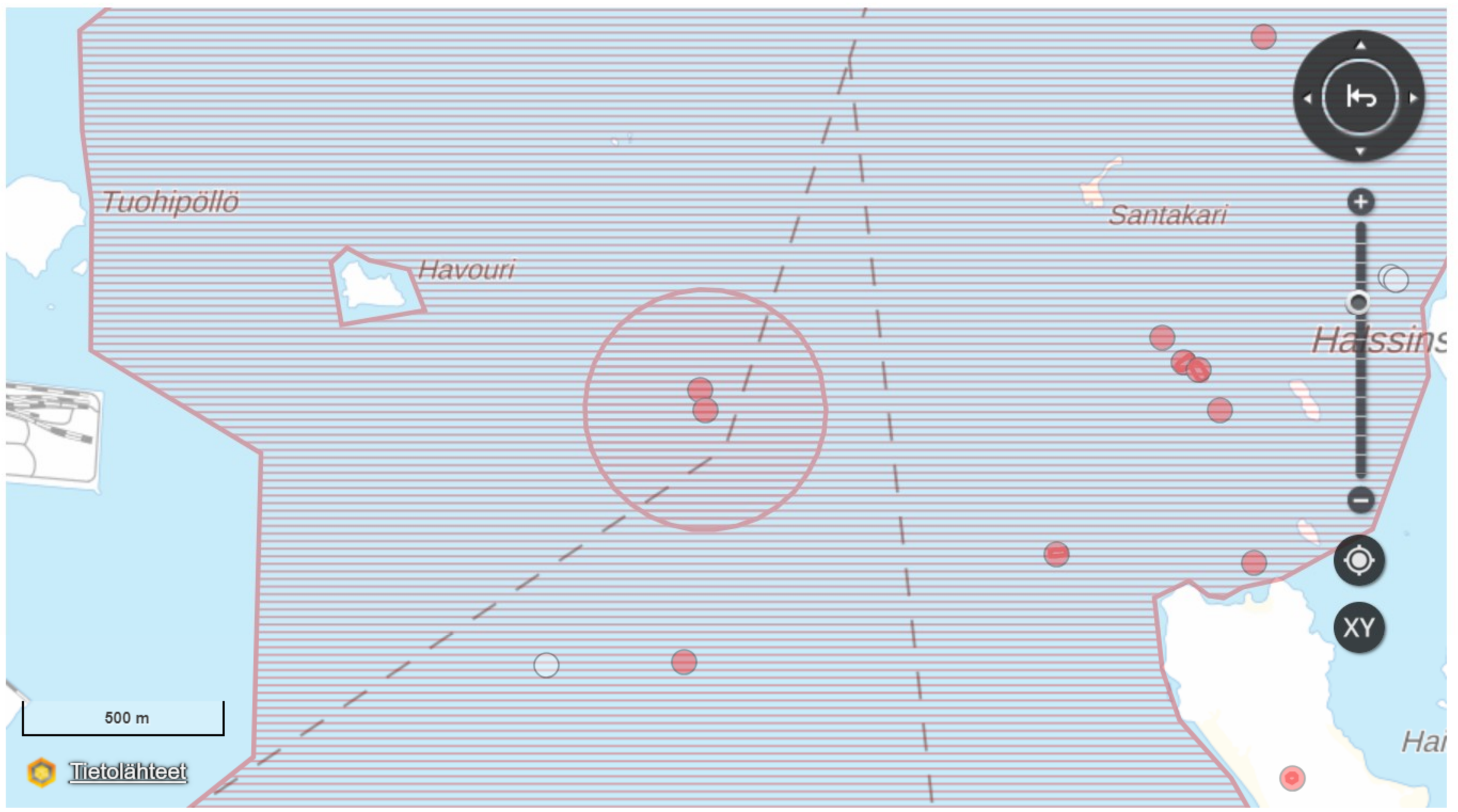
Research team and rapporteur: MAS research expedition 08/2023, Markku Luoto

Research data: https://masdownload.mikrojebe.fi/kähet/1108_st-nikolai/

Link to the Ancient Relics Register: https://www.kyppi.fi/palveluikkuna/mjreki/read/asp/r_kohde_det.aspx?KOHDE_ID=110...

Link to this page: <https://www.mas.fi/fi/julkaisut/hylkykehte-merialue/st-nikolai-kotka-mvid1108>

Location on the map in relation to other ancient remains



Research measures performed

The purpose of the study was to supplement the 3D ontology of Baltic Sea wrecks collected by the Finnish Maritime Archaeological Society. The wreck was located using GPS and the coordinates of the Kyppi.fi service, which directly hit the wreck slightly to its western end. The wreck area was investigated by diving and only using non-intrusive methods. The wrecks were filmed with 4k and FHD videos. The filming was carried out from a distance of less than a meter. No timing samples were taken. In addition, the quality of the wood material and structural components were generally observed in terms of identification. Due to poor visibility, no material suitable for modeling was captured from the wreck. All source materials can be found in the "masdownload" link provided above in the directory of the wreck site in question.

Description of the item

The wreck area is located on the main fairway in front of the Kotka port area, in the so-called Kukouri bend, but on such an "inside curve" that even during diving operations, ships with good maneuverability were able to pass the research area without causing danger. The remains of the ship lie almost in an east-west direction, with the stern at the eastern end. The stern can be identified by the still upright stern coaming, from which the rudder hinges can be distinguished. The wreck was heavily covered with the stern's beard and filamentous algae. Visibility outside the wreck was about half a meter. Inside the wreck, in those places where the side was still intact, visibility was about a meter. Therefore, the image material is mainly indicative, and no more extensive observations could be made. The northern or starboard side has mostly collapsed to the bottom or, at the eastern end, possibly folded partially onto the wreck. The southern or port side is still standing, about eight gun ports away, at about the same level as the top of the gun ports. Some of the deck beams appear to be missing. We only found one gun aft, on the port side, at the first surviving gun port. Other finds were copper coins, bottles, brass buckles, and cannon and musket balls. Determining the exact location of the finds proved impossible due to disorientation caused by poor visibility.

Preliminary interpretation

Our preliminary interpretation is that the previously defined contextual information, according to which the wreck is the wreck of the St. Nikolai, which was destroyed in the Battle of the Ruotsinsalmi, may well be correct. In our opinion, the wreck no longer closely matches the miniature models or drawings made of it in-situ, but can be said to have suffered significantly from the practice of maritime archaeology over the decades. 3D modeling of the stacked models of the wreck could be important so that future generations would have the opportunity to at least virtually dive into such a magnificent wreck, about which much has been written.

The St. Nikolai wreck has been preliminarily modeled for the "Fate of Ruotsinsalmi" exhibition 2019-2020 by Richard Eller, whose Sketchfab link is below.

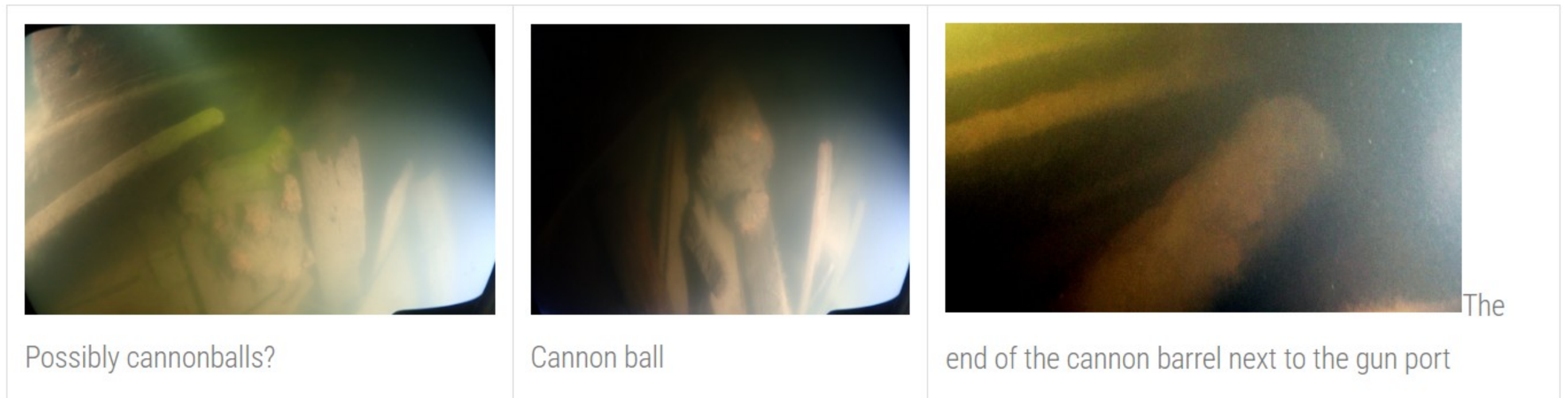
<https://sketchfab.com/3d-models/st-nikolai-1b22412deb9e4375806274a097c0c4f8>

Two reconstructions of the ship have been made for the same exhibition, one with the sails open. Links to them are also below.

<https://sketchfab.com/3d-models/russian-archipelago-frigate-svjatoi-nikolai-3e89828a09fa4a7e840a4ab3ce5482e2>

<https://sketchfab.com/3d-models/russian-archipelago-frigate-svjatoi-nikolai-2e0c2c37a55f48bba314c894ca5e5f0b>

Pictures of the wreck



Last edited on 26.3.2024

Page history in PDF files:

[st-nikolai_mvid1108_2024-03-26_mas.fi-b.pdf](#)



Contact information

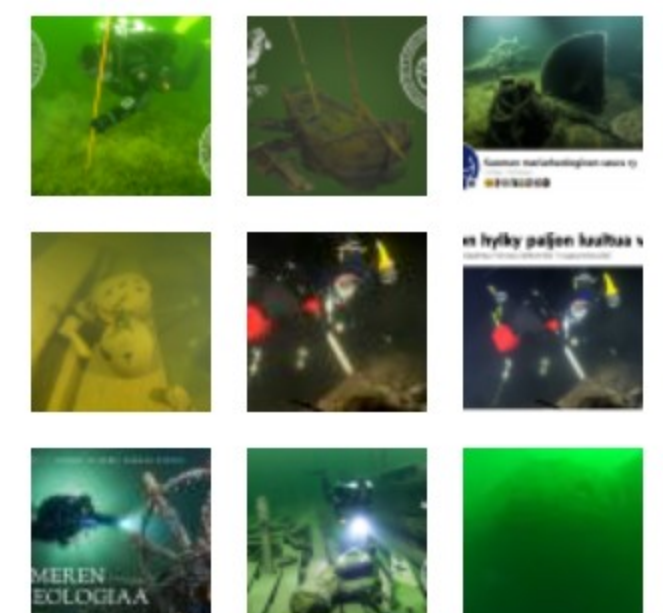
- all club communication channels

3D models in Sketchfab

- a showcase of the wrecks we modeled

MAS portal

- the club's open data repository, approx. 18TB



More pictures of our activities

