



© Topi Sellman / www.mas.fi

## Wrecks north of Lehmäsaari (Kotka) (St. Maria, Dhow Wreck, Cannon Sloop)

The remains of four ships have been discovered in the shoals between Santakari and Lehmäsaari, which appear to originate from the naval battles of Ruotsinsalmi, as reported by tradition and historical sources.

**Location (WGS84) and date of last inspection:** Long 60° 25.9260' N, Lat 26° 58.6714' E // August 27, 2023

**Depth & length & direction:** about 2-12m. Coordinates to the Jolla wreck

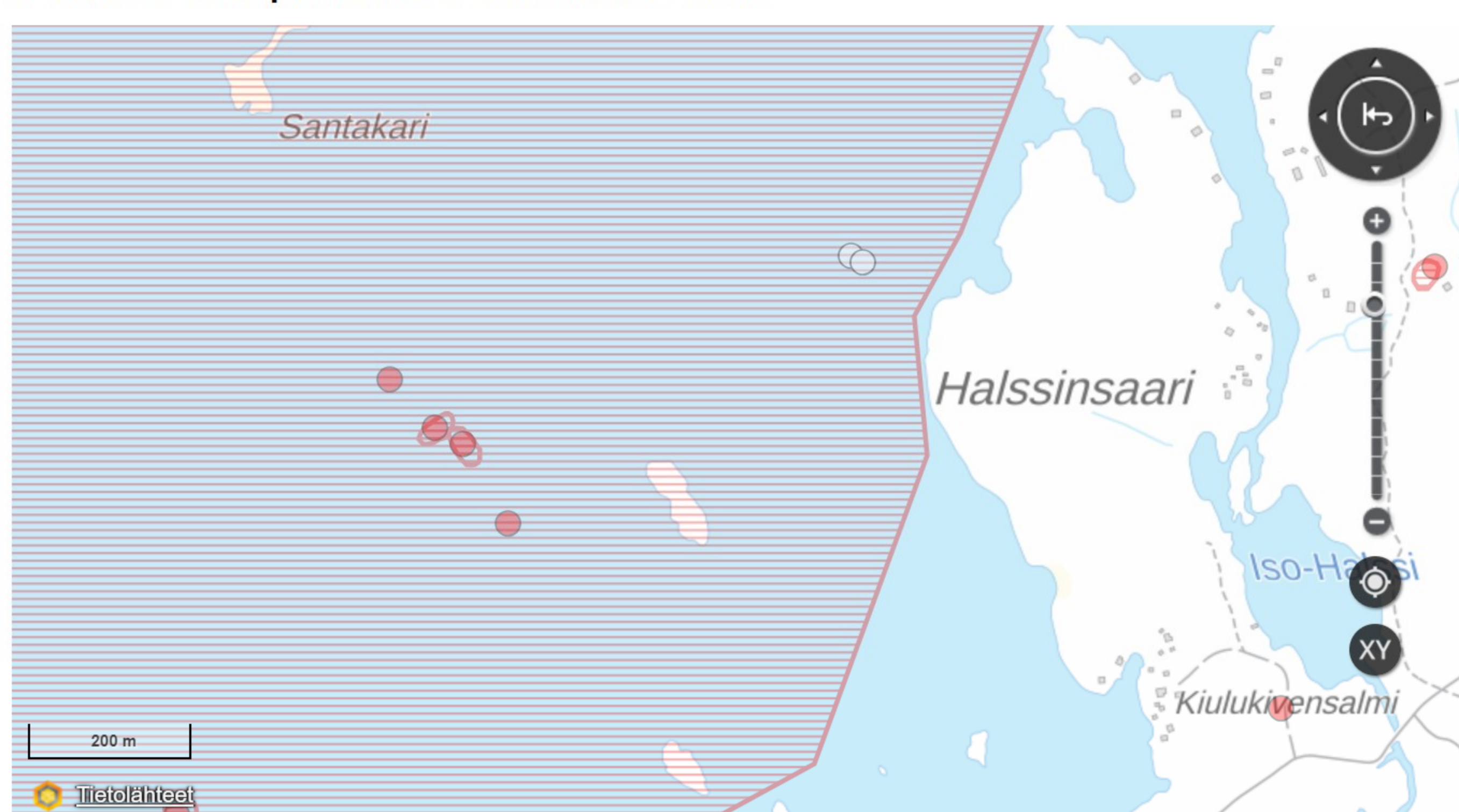
**Research team and rapporteur:** MAS and Markku Luoto

**Research data:** <https://masdownload.mikrojebe.fi/kähet/>

**Link to the Ancient Relics Register:** <https://www.kyppi.fi/palveluikkuna/mjreki/>

**Link to this page:** <https://www.mas.fi/fi/julkaisut/hylkykehte-merialue/lehmasaaren-pohjoispuolen-...>

### Location on the map in relation to other ancient remains



### Research measures performed

The purpose of the study was to supplement the 3D ontology of Baltic Sea wrecks collected by the Finnish Maritime Archaeological Society. The wrecks were located using GPS and the coordinates of the Kyppi.fi service, which directly hit the wrecks, excluding the St. Maria wreck, the location of which is difficult to determine due to its widespread remains. The wreck area was investigated by diving and only using non-intrusive methods. The wrecks were filmed with 4k and FHD videos. The filming was carried out from a distance of less than a meter. No timing samples were taken. In addition, the quality of the wood material and the methods of attaching structural parts were generally observed. Topi Sellman made a 3D model of the cannon in the slipway of the Jolla wreck (MVID#1114), which contains a total of 400 images and the 3D model created from them has approximately 2,800,000 polygons, approximately 59MB in size. Markku Luoto optimized and annotated the model in Sketchfab. Similarly, the images on this page are extracted from 4k material shot by Markku Luoto. All source material and results can be found in the "massdownload" link above in the directory of the wreck site in question.

### Description of the item

The wreck site is located between the shoals south of Santakari and north of Lehmäsaari. The remains of four ships (St. Maria (MVID#1109), Jollahylky (MVID#1114), Tykkisluuppi (MVID#1116) and Proserpina (MVID#1117)) are known from the area, two of which (Jollahylky and Tykkisluuppi) have previously been modeled by order of Kotka Merikeskus Wellamo (Richard Eller). The bottom depth at the wrecks is approximately 2-12 m. The entire wreck site is several hectares in size. Jollahylky and Tykkisluuppi are so close together that they were observed in a single dive. These two wrecks were also fairly coherent targets, while the remains of St. Maria are spread over such a wide area that modeling it using photogrammetry would require a separate study. None of the three wrecks inspected (Proserpina was not dived) were found to have any loose objects - apart from wooden structural parts, the cannon from the Jolla wreck and a few musket balls.

### Preliminary interpretation

Our preliminary interpretation is that the previously defined contextual information, according to which the wrecks were the ice roads of ships destroyed in the Battle of the Swedish Strait, may well be correct. A more detailed study of the wrecks, for example for comparison with historical sources and identification of the ships, would require cooperation with maritime historians familiar with the battle. The sliding gun on the Jolla wreck is probably the only surviving entity of its kind so far and raises the question of whether it should be raised and conserved for posterity? Due to its shallow location, ice, biological and current effects will destroy the wreck or at least the sliding gun in the foreseeable future. Imaging the St. Maria wreck area would perhaps be best done using oblique echo mosaic or then ROV.

The Dhow Wreck and the Gunboat have been modeled for the "Fate of Ruotsinsalmi" exhibition 2019-2020 by Richard Eller. Their Sketofab links are below.

<https://sketchfab.com/3d-models/ns-jolla-hylky-0276e899ef364624a4428805b84965b4>

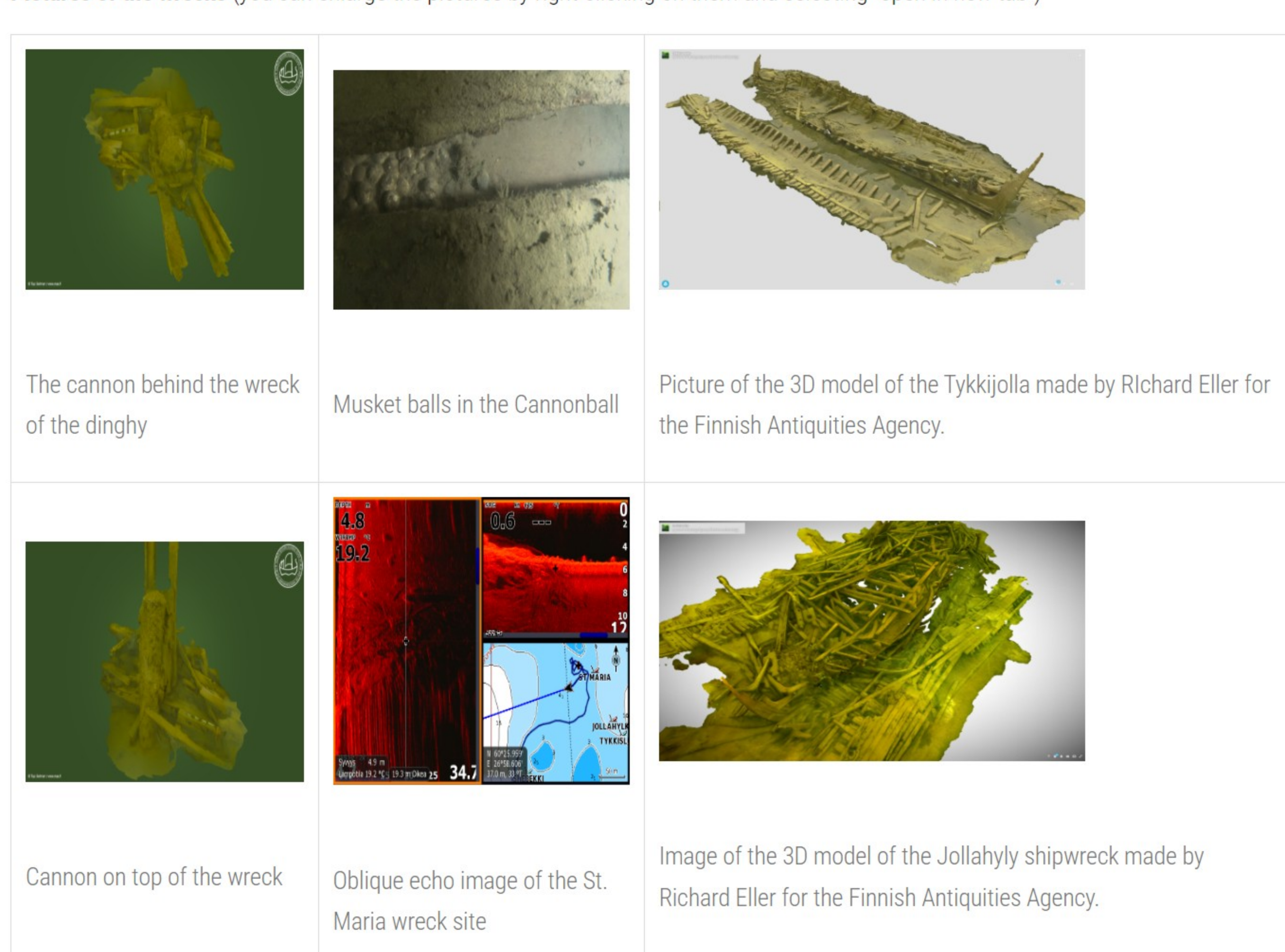
<https://sketchfab.com/3d-models/tykkisluuppi-03361b9a7a3b465bb6a710db0c236e87>

### 3D model of a dinghy cannon



Shipwreck Jollahylky (Kotka) by Finnish Maritime Archaeology Society on Sketchfab

### Pictures of the wrecks (you can enlarge the pictures by right-clicking on them and selecting "open in new tab")



Last edited on 26.3.2024

### Page history in PDF files:

[lehmasaare\\_north\\_wrecks\\_st-maria\\_jollahylky\\_tykkisluuppi\\_2024-03-26\\_mas.fi\\_.pdf](#)

[lehmasaare\\_north\\_wrecks\\_stmaria\\_jollahylky\\_tykkisluuppi\\_2024-03-25\\_mas.fi\\_.pdf](#)



### Contact information

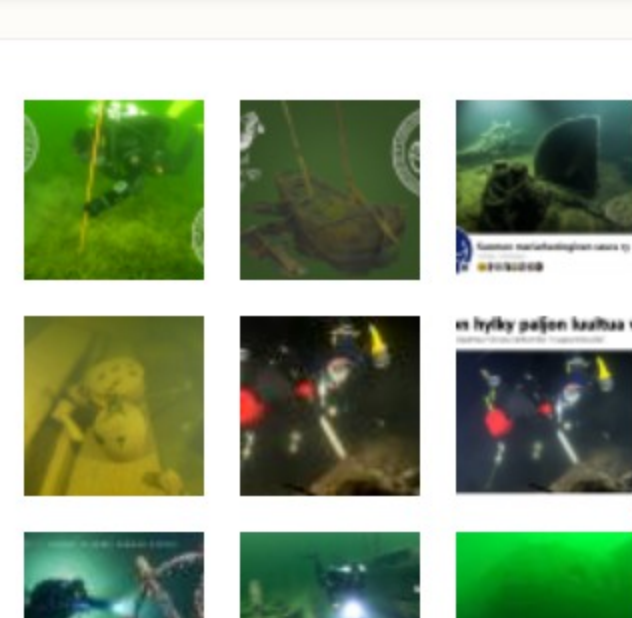
- all club communication channels

### 3D models in Sketchfab

- a showcase of the wrecks we modeled

### MAS portal

- the club's open data repository, approx. 18TB



More pictures of our activities

